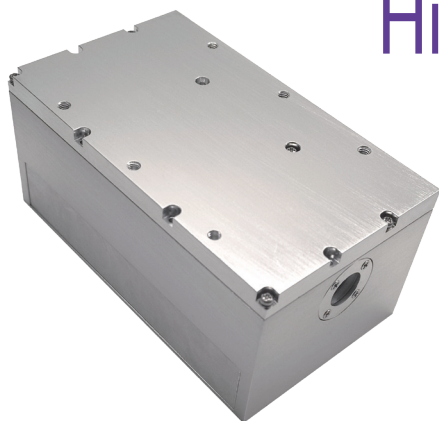


AQE Series

High Energy Solid-state Laser



The AQE series is a self-developed actively Q-switched DPSS laser by RealLight. Utilizing our proprietary GS-series diode laser arrays as the pump source, it features an integrated laser head and power supply design. With high pulse energy, compact size, and low power consumption, it is particularly suitable for LIBS and laser ablation applications.

Key Features

- ◆ Pulse energy $\geq 50\text{mJ}$
- ◆ Compact size
- ◆ Conduction cooling
- ◆ Exceptional cost performance

Applications

Laser ablation
Laser-induced breakdown spectroscopy (LIBS)
Optical damage threshold testing
Spectrum analysis
Radar ranging

Technical Specifications

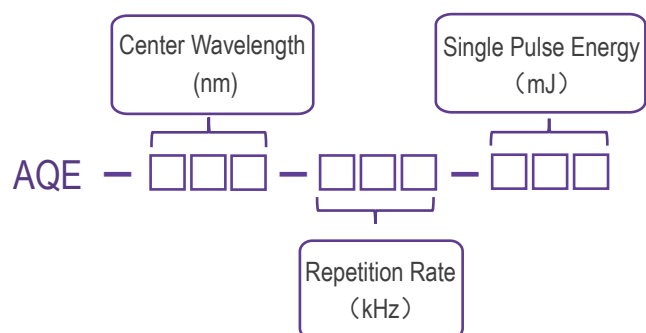
Optical Parameters				
Wavelength (nm)		1064	532	355
Repetition rate (Hz)		20		
Pulse energy (mJ)		50	30	15
Pulse width (ns)		<6		
Power stability (RMS)		<3%		
Full angle divergence typ. (mrad)	Horizontal @1/e ²	<4		
	Vertical @1/e ²	<4		
Beam diameter (at output port, mm)		2.5		
Cooling method		air cooling		
Laser dimensions (W×H×L,mm)		85×60×130		85×60×175
Operation temperature (℃)		10~35		
Storage temperature (℃)		-20~60		
Driver Parameters				
Supply power voltage		24VDC		
Control interface		J30J~15ZKL		
Power consumption (W)		45W (MAX)		
Trigger mode		Trigger In/Out		

All the data in the above table are the typical values obtained from the tests at room temperature of 25℃, and the final data is subject to the final test report.

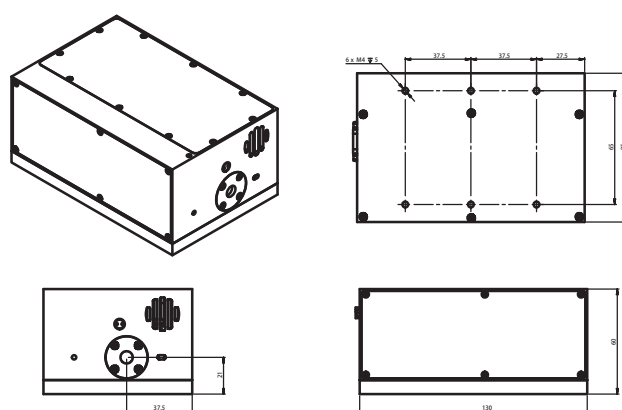
Order Information

Wavelength (nm)	Part Number	Repetition rate (kHz)	Pulse energy (mJ)
1064	AQE-1064-0.02-50	0.02	50
532	AQE-532-0.02-30	0.02	30
355	AQE-355-0.02-15	0.02	15

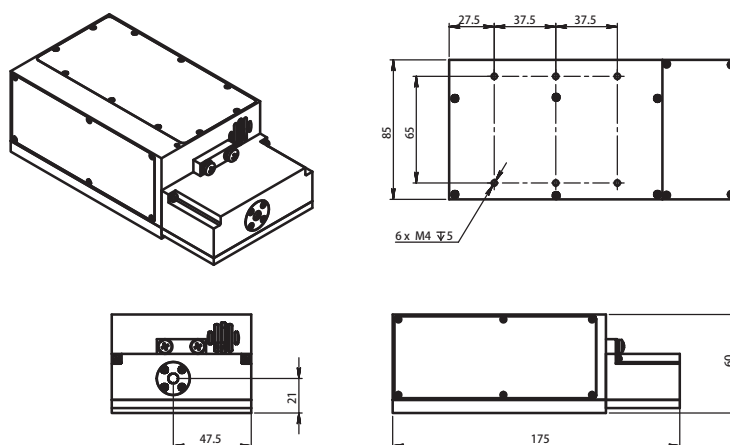
Part Numbering Schema



Mechanical Drawings (in mm)



1064nm & 532nm Drawing



355nm Drawing

