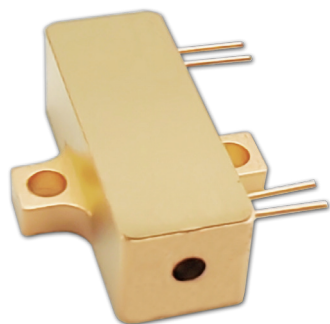


High Repetition Rate 1535nm Erbium Glass Lasers with PIN



High repetition rate 1535nm Erbium glass lasers with photodetector (PIN) are RealLight's self-developed eye-safe lasers operating at 1-5kHz. This series of lasers are equipped with integrated photodetector(PIN), which is able to provide PD output signal. Utilizing the semiconductor laser packaging technology, these lasers feature compact size, sufficient performance stability and excellent beam quality.

Applications

Obstacle avoidance radar
Meteorological radar
Laser rangefinder

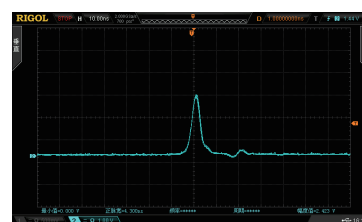
Key Features

- ◆ Integrated PIN, provides PD output signal
- ◆ Passively Q-Switched, Er: Glass
- ◆ Eye-safe
- ◆ Wide temperature operation

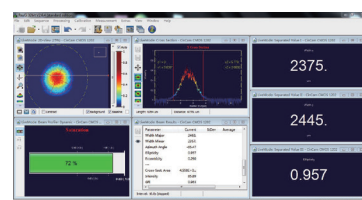
Technical Specifications

Wavelength (nm)	1535		
Pulse energy (μJ)	40	20	10
Repetition rate (kHz)	1	2.5	5
Pulse width (typ., ns)	5	6	8
Energy Stability (RMS)	3%		
Beam full divergence (typ., mrad)	20	17	18
Beam profile	TEM ₀₀		
PIN amplitude (V@50Ω resistance)	2		
Operating current (A)	5		
Operating voltage (V)	2		
Dimensions (L×W×H,mm)	25x8x7		
Weight (g)	12		
Operation temperature (°C)	-40~65		
Storage temperature (°C)	-45~80		

All the data in the above table are the typical values obtained from the tests at room temperature of 25°C, and the final data is subject to the final test report.



PIN signal and amplitude



Beam profile

Order Information

Wavelength (nm)	Part Number	Repetition rate (kHz)	Pulse width (ns)	Pulse energy (μJ)	Dimensions (mm)
1535	R1535-1-5-40-F2B	1	5	40	25x8x7
	R1535-2.5-6-20-F2B	2.5	6	20	
	R1535-5-8-10-F2B	5	8	10	

Mechanical Drawings(in mm)

