



High repetition rate 1535nm Erbium glass lasers are RealLight's self-developed eye-safe lasers operating at 1-5kHz. Utilizing the semiconductor laser packaging technology, these lasers feature compact size, sufficient performance stability and excellent beam quality.

- ◆ Passively Q-Switched, Er: Glass
- ◆ Eye-safe
- ◆ Extremely light
- ◆ Wide operating temperature range

- Obstacle avoidance radar
- Meteorological radar
- Laser rangefinder

Wavelength ( nm )	1535		
Pulse energy (μJ)	40	20	10
Repetition rate (kHz)	1	2.5	5
Pulse width (typ., ns)	5	6	8
Energy Stability (RMS)	3%		
Beam full divergence (typ., mrad)	20	17	18
Beam profile	TEM <sub>00</sub>		
Operating current (A)	5		
Operating voltage (V)	2		
Dimensions (L×W×H,mm)	25x8x7		
Weight (g)	10		
Operation temperature (°C)	-40~65		
Storage temperature (°C)	-45~80		

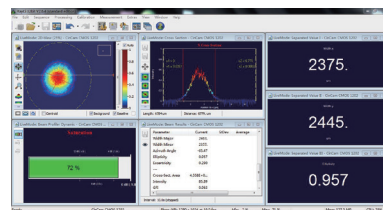
Ch1 + 縦幅  
4.62ns

Ch1 幅値  
1.16 V

200mV □ M 2.00ns A Ch1 f 260mV

10 1月 20 12 20.5

### Typical Pluse



## Beam Profile

Wavelength ( nm )	Part Number	Repetition rate (kHz)	Pulse width (ns)	Pulse energy (μJ)	Dimensions (mm)
1535	R1535-1-5-40-F2A	1	5	40	25x8x7
	R1535-2.5-6-20-F2A	2.5	6	20	25x8x7
	R1535-5-8-10-F2A	5	8	10	25x8x7

Technical drawing of the 2-4000M hydraulic cylinder. The drawing includes a front view (top) and a side view (bottom). The front view shows a cylinder with a diameter of  $\varnothing 7$  and a length of 20. The side view shows a cylinder with a diameter of  $\varnothing 2.4$  and a length of 25. The drawing also includes dimensions for the mounting bracket, such as 3.85, 2.5, 3.5, 6, 8, 12, and 16. The cylinder is labeled "2-4000M" and "LD" on the side view.

