

# RL-IRP Series Immersion Raman Probe



RealLight's self-developed Raman probes, featuring excellent coupling efficiency, wide spectral range and good stability, can be used for laboratory applications, field measurements, etc. Manual safety shutter, different fiber connectors or probes with different working distance are available according to the demands, to effectively complete the measurement of liquids and solids. The RL-IRP series immersion Raman probes are compatible with RealLight's NL series single-mode/multi-mode narrow linewidth diode lasers.

## Key Features

- ◆ High sensitivity
- ◆ Compact design
- ◆ Low loss
- ◆ O.D.>6
- ◆ Multiple wavelengths available

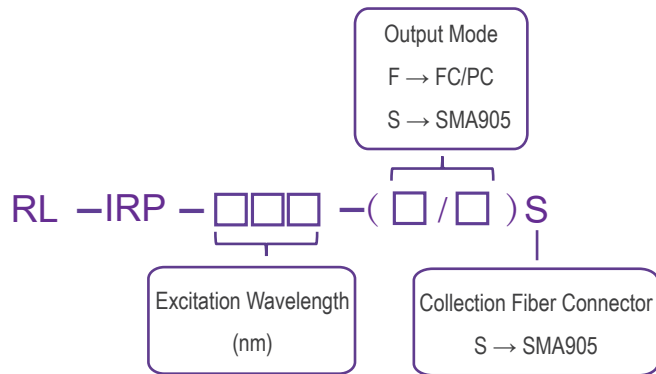
## Standard Wavelength

- ◆ 532nm
- ◆ 785nm
- ◆ 830nm
- ◆ 1064nm

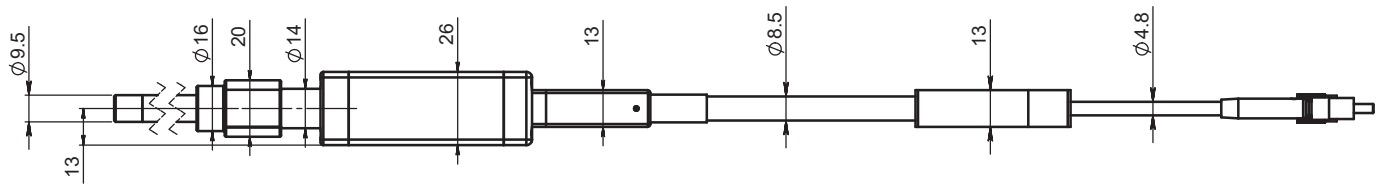
## Technical Specifications

Part No.	RL-IRP-532-(F/S)S	RL-IRP-785-(F/S)S	RL-IRP-830-(F/S)S	RL-IRP-1064-(F/S)S
Center Wavelength (nm)	532	785	830	1064
Spectral Range (cm <sup>-1</sup> )	176~4000	176~3500	176~2800	200~3000
Operating Mode	Fiber pigtailed			
Probe Outer Dimensions (mm)	12			
Probe Tube Length	customizable			
Filter Efficiency	OD6			
Working Distance/Applicable System	0.5~1mm / Liquid			
Excitation Fiber	105μm, NA0.22; SMA905 or FC/PC			
Collection Fiber	200μm, NA0.22; SMA905			
Fiber Length (cm)	(100+30)±0.2			
Operating Temperature (°C)	-20~150			
Maximum Pressure Resistance (MPa)	1			
pH Tolerance Range	1~14			

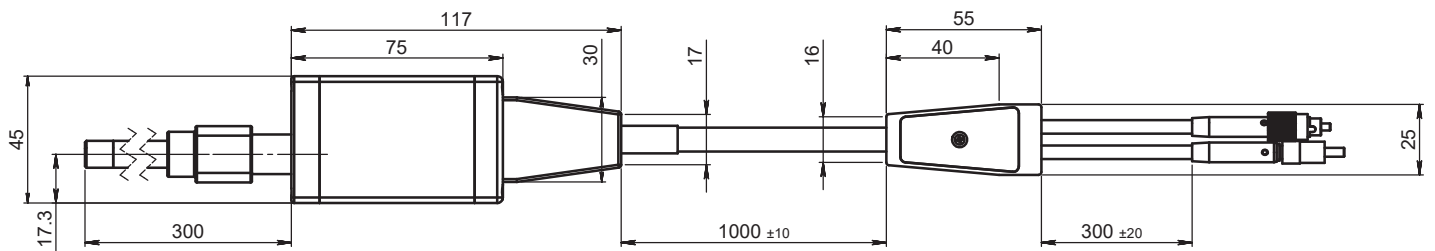
## Part Numbering Schema



## Mechanical Drawings (mm)



Side View



Top View